

CREW



"THE AFRICAN WORLD"



His Excellency The Late General Sir Joachim Machado, G.C.M.G.



Sir Robert Williams, Bt. J.P., F.R.G.S.

ANGOLA KATANGA SOUVENIR EDITION

PUBLISHED NOVEMBER, 1929



Photo: Lazarus Bros., Lisbon, His Excellency General Eduardo Marques, Portuguese Minister for the Colonies.

The Western Atlantic Key to Central and Southern Africa



Photo: 'African World'

A Benguela Mail Train steaming from Lobito to the Congo Beige Frontier



From "The Times."

WEST AFRICA

10940

189 Folio

***The Opening of the Benguela Railway. The Western Key to
Central & Southern Africa***

**This eBook is a reproduction of an historical journal provided by
The John Rylands Research Institute and Library, The University of
Manchester, United Kingdom**

(University of Manchester Library Reference: West Africa 10940.189)

Published by BICOT, Rua Luís Mota Feo, n.º 18, Luanda, Angola
Website: www.angola-books.com

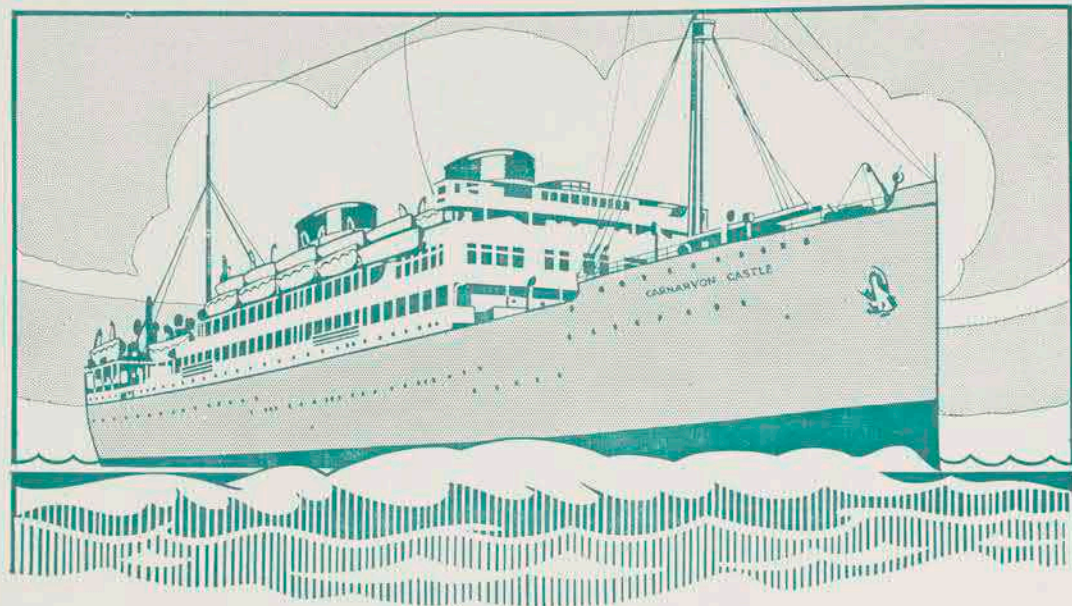
First Edition. Publication Date: 2024.

70% of the purchase price of this eBook will be donated to The HALO
Trust for demining work in Angola.

Acknowledgements

Image acquisition funded by John Comley. eBook editing by Chris
Mannhardt.

SOUTH AFRICA



WEST & EAST AFRICA
MADEIRA & CANARY ISLANDS
ROYAL MAIL SERVICE

Special Christmas and New Year
TOURS TO SOUTH AFRICA

AT REDUCED RETURN FARES

Also similar

TOURS TO ENGLAND
FROM SOUTH AFRICAN PORTS

Write for full particulars to the

UNION-CASTLE LINE

Head Office: 3, Fenchurch Street, London, E.C.3.

West End Agency: 125, Pall Mall, S.W.1.

Branch Offices at SOUTHAMPTON, BIRMINGHAM, LEEDS, LIVERPOOL, MANCHESTER and GLASGOW.

Also at CAPETOWN, ALGOA BAY, EAST LONDON, NATAL, JOHANNESBURG,
LOURENÇO MARQUES, BEIRA and MOMBASA



THE AFRICAN EVENT OF THE YEAR



*Photo by
Hoppe.*

HIS MAJESTY KING GEORGE V,
The beloved Sovereign of the British Commonwealth.

**H.R.H.
PRINCE
ARTHUR
OF
CONNAUGHT.**
K.G.,
K.T., P.C.,
G.C.M.G.,
G.C.V.O.,
G.C.B.

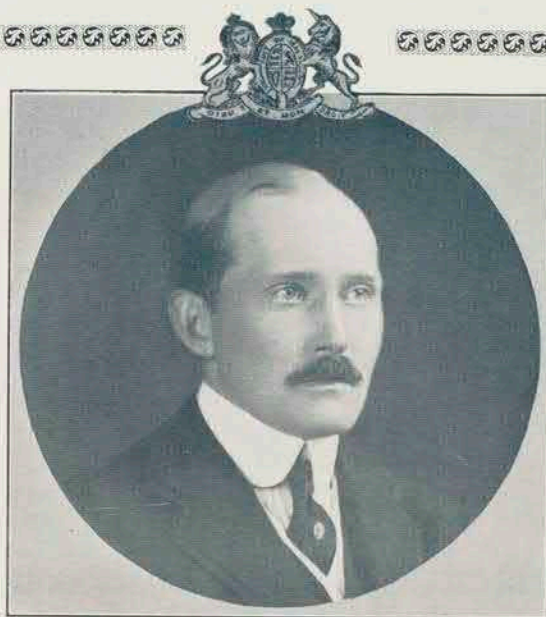


Photo by Bassano.

who
represented
His Majesty
the King
at the opening
of the
Benguela
Railway,
on June 10th,
1929.

THE DISTINGUISHED PRESIDENT
OF THE REPUBLIC OF PORTUGAL.



Photo by Lazarus Bros., Lisbon

HIS EXCELLENCY
GENERAL OSCAR CARMONA.

The Opening of the Benguela Railway.

The Western Key to Central & Southern Africa

SPECIALLY COMPILED BY

LEO WEINTHAL, C.B.E., Chief Editor of

“THE AFRICAN WORLD”

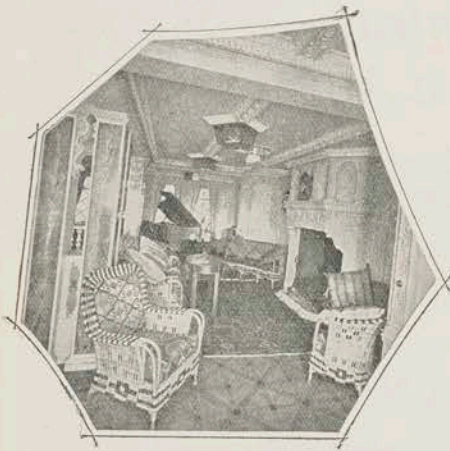
801, Salisbury House, London Wall, E.C.2.

Principal Contents :

The Evolution of Angola : By Col. F. de Utra Machado	7
Southampton to Lobito and Back	9
The Opening of the Benguela Railway : Full record of the ceremony in special dispatches	16
The Benguela Railway : The First 150 Kilometres : By Sir John Norton-Griffiths, Bart.	31
Sir John Norton-Griffiths, Bart.	35
Pioneer Railways across Africa : By H. F. Varian	37
The Benguela Railway Described : By Edward L. Goodman	49
The Trade and Industry of Angola	61
A Visit to Katanga	69
The Great Copper Belt of South-Central Africa : By Owen Letcher	73
The Copper Fields of South-Central Africa : By Owen Letcher	77
Lobito to Beira : By G. H. Lepper	85



ELDER DEMPSTER LINES



LOUNGE : T.M.S. "ACCRA."

Regular Passenger, Mail and Cargo Services between Liverpool, London, Hull, Cardiff, Plymouth, Hamburg, Bremen, Amsterdam, Rotterdam, Antwerp, New York, Montreal, and West and South-West African Ports.

to
and
from

**WEST and
SOUTH-WEST
AFRICA**

HEAD OFFICE :

Colonial House, Water Street, LIVERPOOL.

LONDON : 114, Fenchurch Street, E.C.3.

And at

HULL, CARDIFF, MANCHESTER,
HAMBURG,

and throughout West Africa.



His Excellency The Late
General Sir Joachim
Machado, G.C.M.G.

The Western Atlantic Key to Central and Southern Africa



Sir Robert Williams, Bt.
J.P., F.R.G.S.

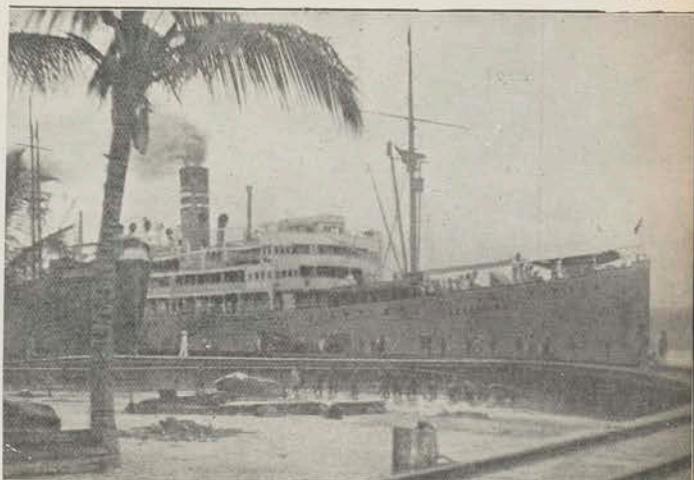
INTRODUCTION.

BY THE EDITOR.

This special edition of THE AFRICAN WORLD gives a full record of one of the outstanding, if not the most important, events of the year, as far as the development of Africa is concerned, and as such it will be welcomed by every one interested in the peaceful conquest of the Continent in the cause of civilisation and in its prosperous economic development. In the presence of many distinguished men, including the representatives of the three Rulers of the great African territories concerned and so closely linked together, there was an impressive ceremonial function on the 10th of June last on the banks of the River Luao, which will remain a treasured memory to all privileged to be present.

The completion of the Benguela Railway from the shores of the Atlantic at Lobito Bay, via Nova Lisboa to the frontier of the Congo Belge, initiated by joint Portuguese and British enterprise a quarter of a century ago, to-day has not only become a concrete fact of immense economic value, but is rightly viewed as an event of international importance. To the genius, foresight and dogged persistence of *one man*, to complete a programme, which at times appeared almost an impossible task, through quite unforeseen circumstances, the result achieved is due, viz., to the indomitable courage of Sir Robert Williams, so deservedly and highly honoured by his own country and the others linked up in the great enterprise. Spurred on by the epic memory of his great countryman, David Livingstone, whose footsteps he took a pride in following, and true to the grand ideals of the founder of Rhodesia for the opening up of Africa as he was inspired by the veteran spirit of the great Portuguese explorers who discovered Africa's finest harbours and made permanent settlements on its richest coast littorals, he carried on his work with great pertinacity of purpose. Encouraged by the friendly reciprocal spirit of the late King Leopold, and in full appreciation of the splendid work of the Belgian pioneers in Katanga and the vast Congo—Sir Robert Williams with his colleagues, unforgettable men, such as the late General Sir Joachim Machado, his brother Mariano, Sir Charles Metcalfe, George Pauling, George Grey and many others, all of whom have passed to the better land not very long ago—has undauntedly pushed forward from Lobito towards

the goal he had fixed twenty-five years ago. On the banks of the Luao River on the 10th June last there was silently signed and sealed a great beneficent understanding between Portugal, Britain and Belgium, representing Angola, the Congo Belge and Rhodesia, which will be endorsed at Tshilongo within the next eighteen months, when that great Trans-continental spine popularly known as the Cape to Cairo Railway Line will have another of its most important ribs linked up with it. Thus the true western key to Central Africa from the Atlantic will very shortly unlock that vast treasure-house by the route which brings Lisbon and London within three weeks of Elizabethville and the Victoria Falls, a fact which could not even be visualised as more than a dream but a few decades ago.



An Ocean Liner at Lobito Wharf, 1929.